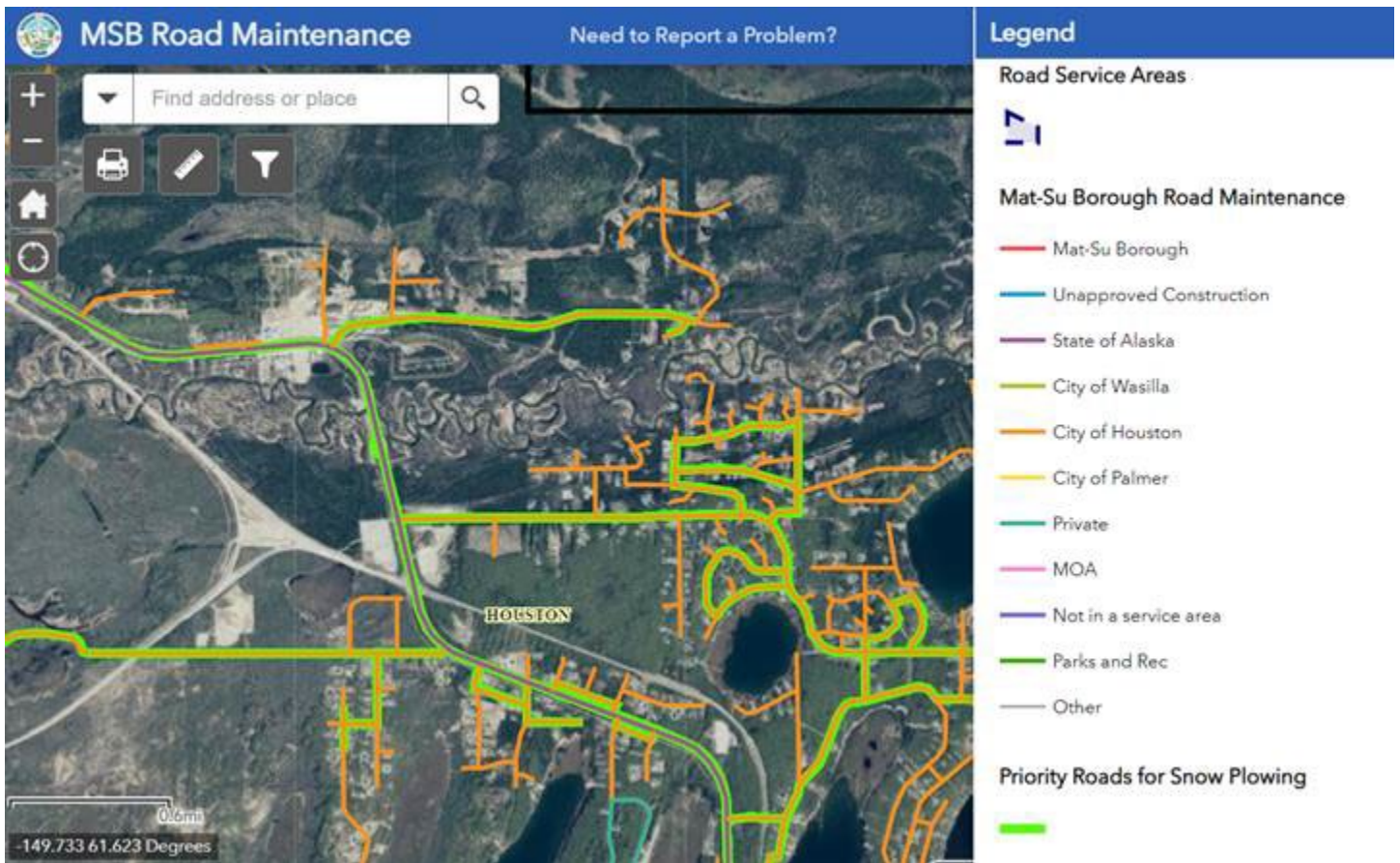


ADDENDUM NO. 2

DATE: Monday, October 3, 2022
TO: Plan Holder List
FROM: Rebecca Rein, City Clerk
RE: **Snowplowing, Sanding, Snow Removal, ITB #22-IB-0908**

1. Is the bidding price per occurrence?
 - a. **The bid can be made per occurrence, monthly, or as a lump sum.**
2. Will the C.O.H update the road list to include the roads that were originally not listed including mileage?
 - a. **Yes, see the above list.**
3. 2. Will the C.O.H. update the road lane miles to match the bid sheet?
 - a. **See the above list for the new lane miles calculation.**
4. 3. What are the designated priority bus route roads? Can C.O.H. provide before bid date?
 - a. **Please see the infographic below:**



5. Are we sanding everything {the whole length of roads} that we plow or just curves, hills, intersections and stop signs?
 - a. **Please apply sand per best practices used on residential roadways.**
6. How is the sand application enforced or monitored?
 - a. **Sand application will be visually inspected by the Public Works Department on an as-needed basis and any deficiencies will be reported to the contractor.**